

# Legislative Network Visualization with R

François Briatte

demos: [briatte.org](http://briatte.org)

## COSPONSORSHIP NETWORKS



Sénat, 2012—2017

Chamber **National Assembly** **Senate**

Legislature **1986—1988** 1988—1993

1993—1997 1997—2002 2002—2007

**2007—2012** 2012—2017  Map

Click a node to show its ego network.

Double click to zoom in or out.

Hide  Edges  Labels  Weak ties

Download  network  full series

RESET ZOOM

ANIMATE

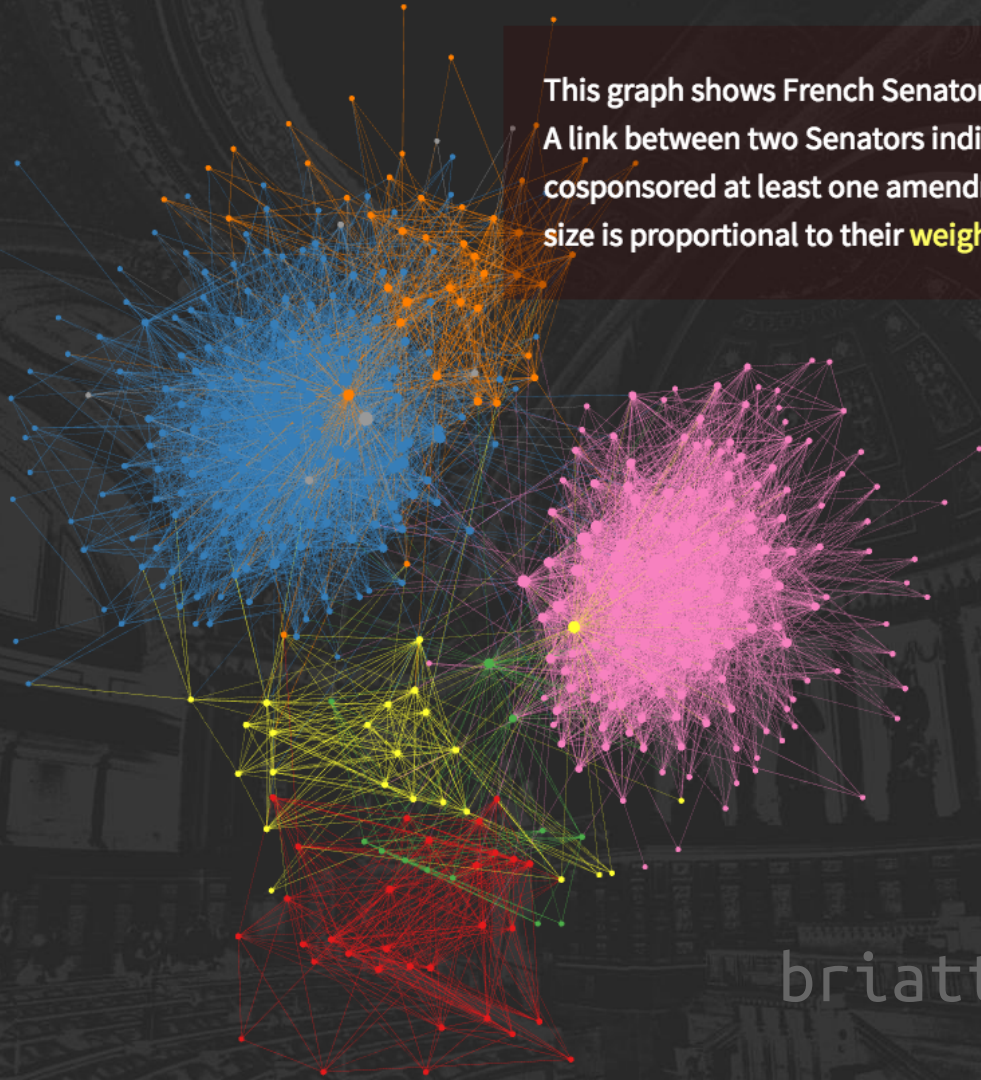


Inspired by [Baptiste Coulmont](#) and [James Fowler](#),  
built with [GEXF](#), [R](#) and [sigma.js](#). Background photo  
by [Romain Vincens](#) (Wikimedia).

TWEET


CODE

This graph shows French Senators during the 14th legislature. A link between two Senators indicates that they have cosponsored at least one amendment, bill or resolution. Their size is proportional to their **weighted degree**.



briatte.org/neta

COSPONSORSHIP NETWORKS

 **Assemblée nationale,**  
1993—1997

Chamber  National Assembly  Senate

Legislature  1986—1988  1988—1993

1993—1997  1997—2002  2002—2007

2007—2012  2012—2017  Map

Click a node to show its ego network.

Double click to zoom in or out.

Hide  Edges  Labels  Weak ties

Download  network  full series

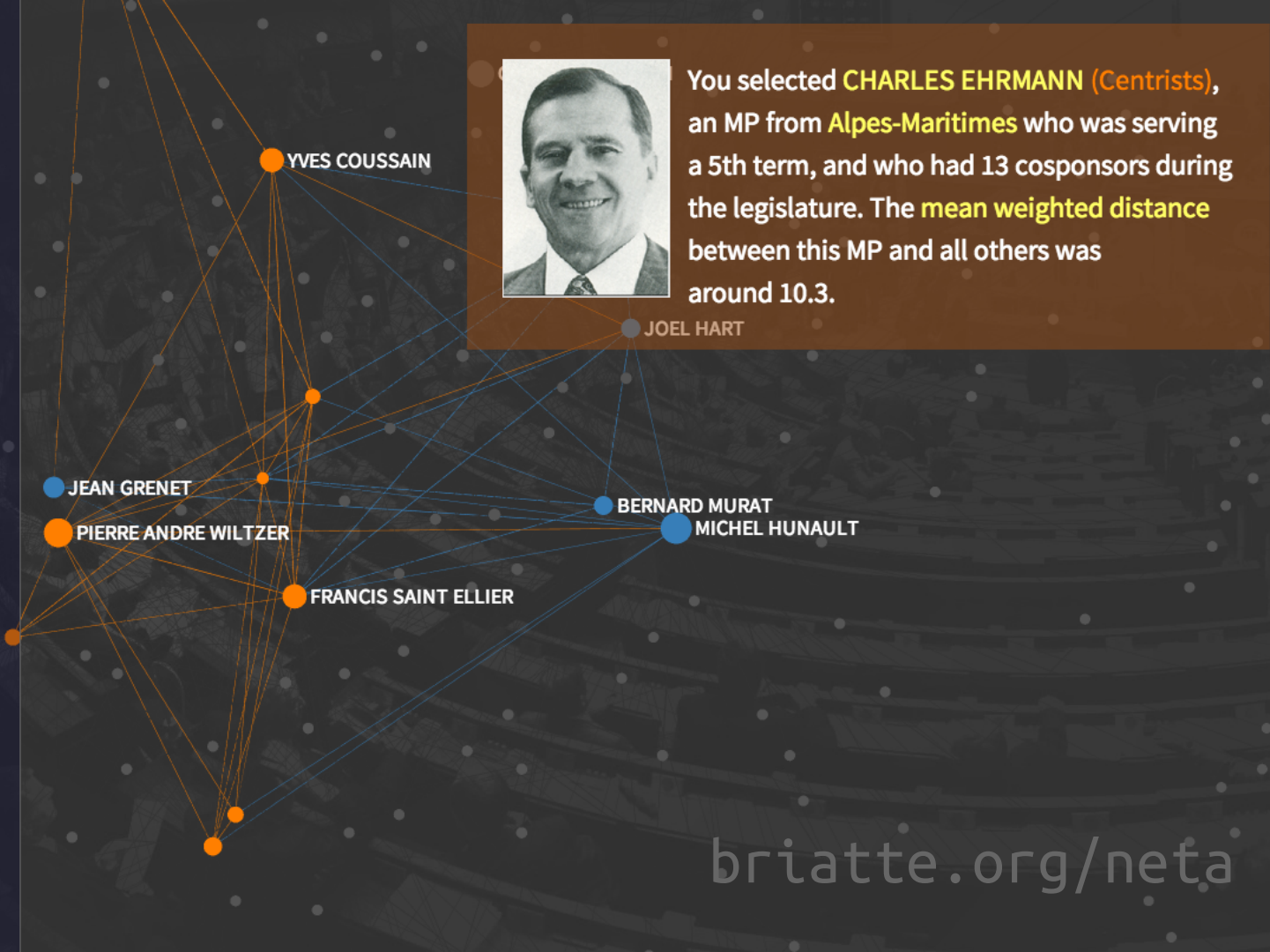
RESET ZOOM

ANIMATE 

Inspired by [Baptiste Coulmont](#) and [James Fowler](#),  
built with [GEXF](#), [R](#) and [sigma.js](#). Background photo  
by [Richard Ying and Tangui Morlier](#) (Wikimedia).

 TWEET

 CODE



### Culture and Education

- Committee [AFCO](#) [AFET](#) [AGRI](#) [BUDG](#)
- [CONT](#) [CRIS](#) **CULT** [DEVE](#) [ECON](#)
- [EMPL](#) [ENVI](#) [FEMM](#) [IMCO](#) [INTA](#) [ITRE](#)
- [JURI](#) [LIBE](#) [PECH](#) [PETI](#) [REGI](#) [SURE](#)
- [TRAN](#)

Click a node to show its ego network.  
 Double click to zoom in or out.

Hide  Edges  Labels  Weak ties

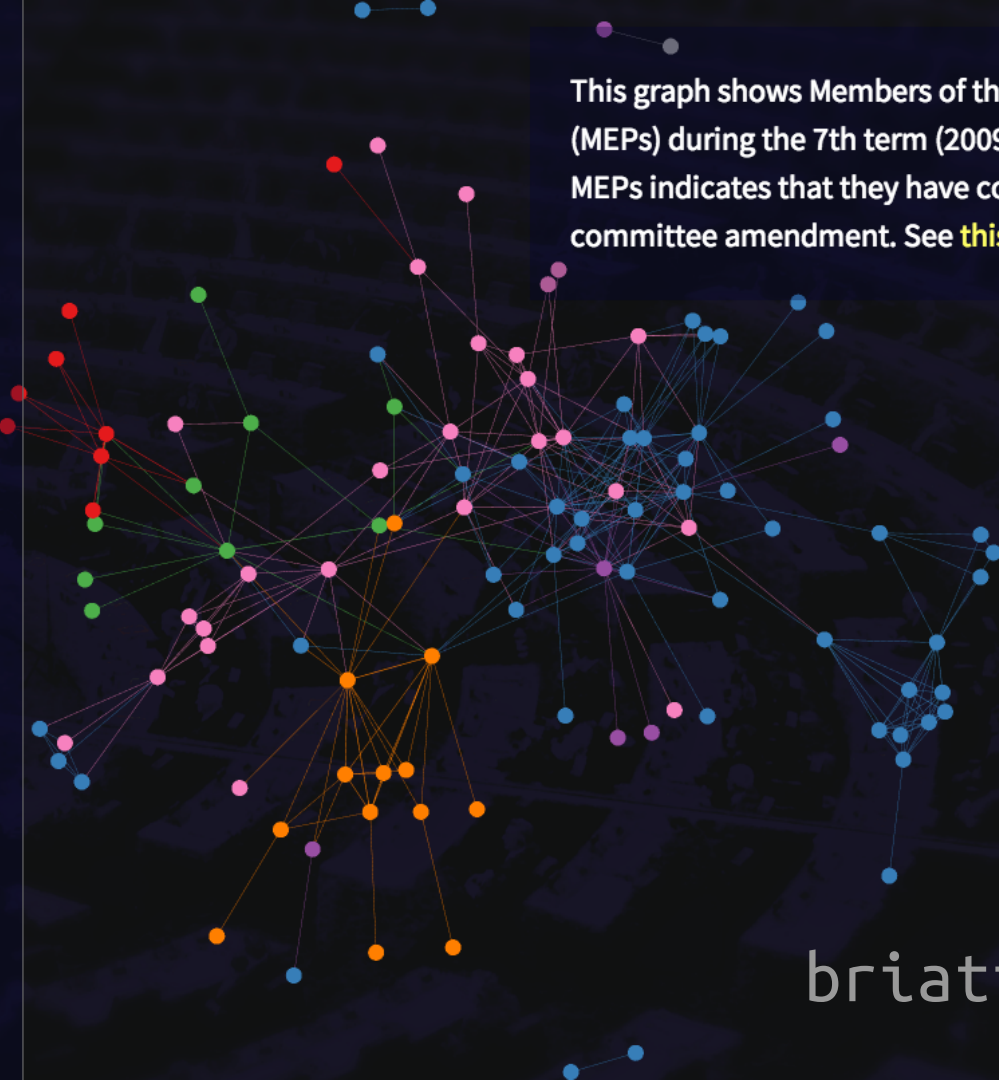
Download [network](#) [full series](#)

[RESET ZOOM](#) [ANIMATE](#) ⓘ

[TWEET](#) [CODE](#)

Amendments data from [Parltrack](#) (May 16, 2014).  
 Background photo by [JLogan](#) (Wikimedia).

This graph shows Members of the European Parliament (MEPs) during the 7th term (2009-2014). A link between two MEPs indicates that they have cosponsored at least one committee amendment. See [this page](#) for more plots.



# Civil Liberties, Justice and Home Affairs

- Committee [AFCO](#) [AFET](#) [AGRI](#) [BUDG](#)
- [CONT](#) [CRIS](#) [CULT](#) [DEVE](#) [ECON](#) [EMPL](#)
- [ENVI](#) [FEMM](#) [IMCO](#) [INTA](#) [ITRE](#) [JURI](#)
- [LIBE](#)** [PECH](#) [PETI](#) [REGI](#) [SURE](#) [TRAN](#)

Click a node to show its ego network.

Double click to zoom in or out.

Hide  Edges  Labels  Weak ties

Download [network](#) [full series](#)

RESET ZOOM

ANIMATE ?

TWEET

CODE

Amendments data from [Parltrack](#) (May 16, 2014).  
Background photo by [JLogan](#) (Wikimedia).



You selected **NILS TORVALDS** (*Centrists*), an MEP who had 16 cosponsors in this committee over the entire term.

[EP HOMEPAGE](#)

[PARLTRACK PROFILE](#)



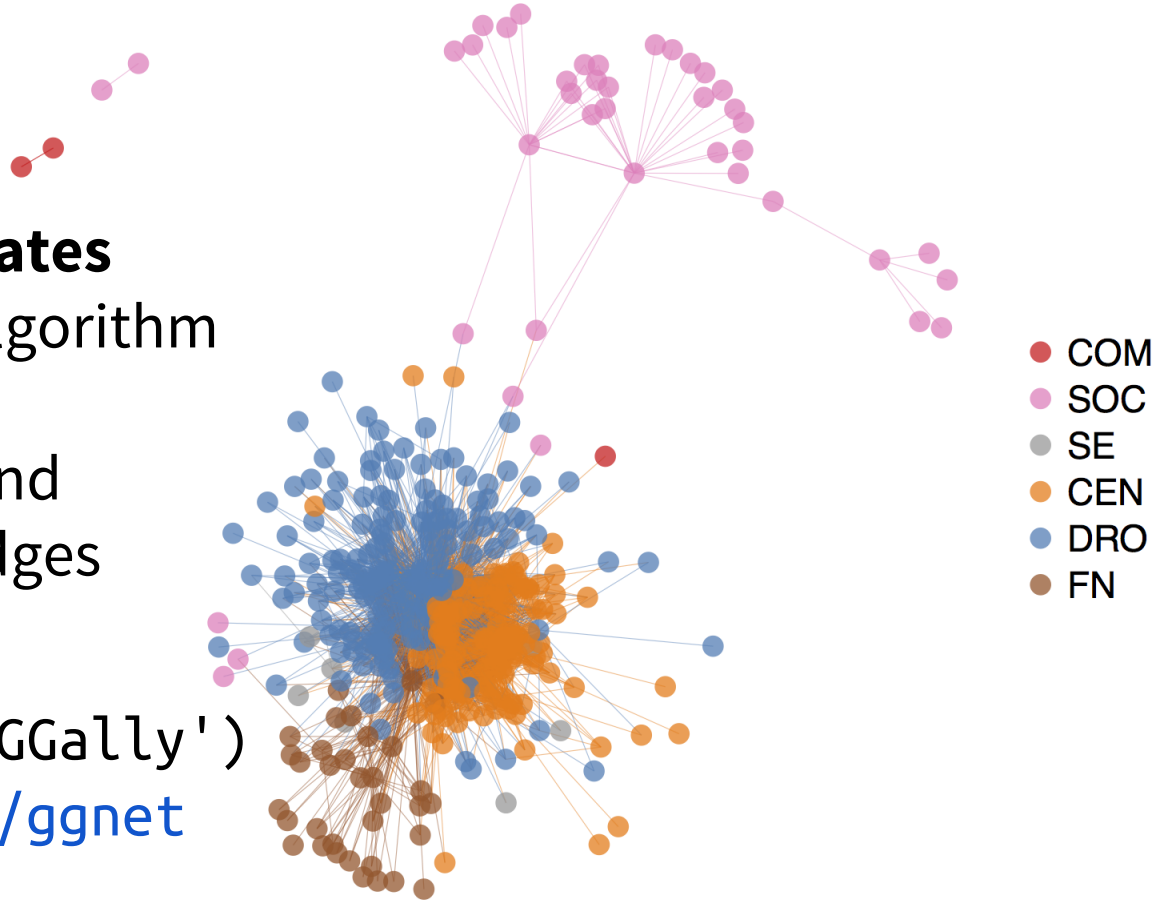
# HOWTO

- 1. Get the raw data** HTML / SQL / JSON  
XML, dplyr, jsonlite
- 2. Build networks** Edge list / Sparse matrix  
igraph, network, sna
- 3. Estimate models** Latent / Temporal ERGMs  
latentnet, ergm

# Graphs (1)

1. **get node coordinates**  
from placement algorithm
2. **pass to ggplot2** and  
plot nodes over edges

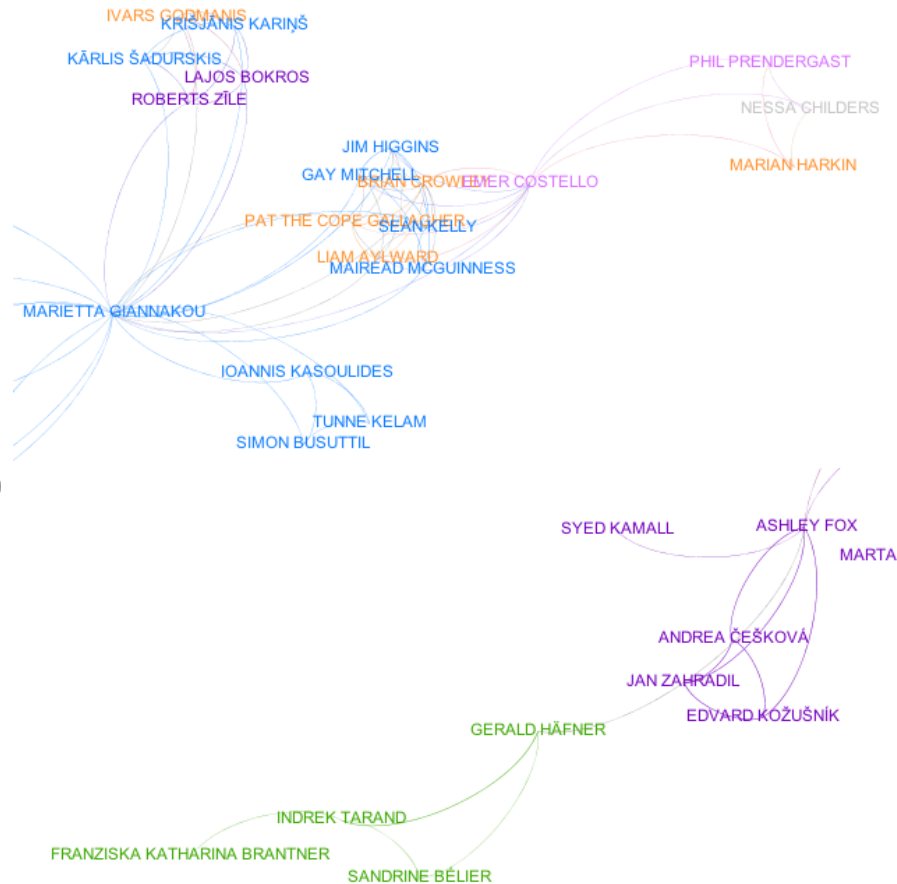
```
install.packages('GGally')  
github.com/briatte/ggnet
```



# Graphs (2)

1. export to **GEXF** format with `rgexf`
2. read with **Gephi** (desktop) or **Sigma.js** (browser)

[github.com/briatte/epam](https://github.com/briatte/epam)  
[github.com/briatte/neta](https://github.com/briatte/neta)

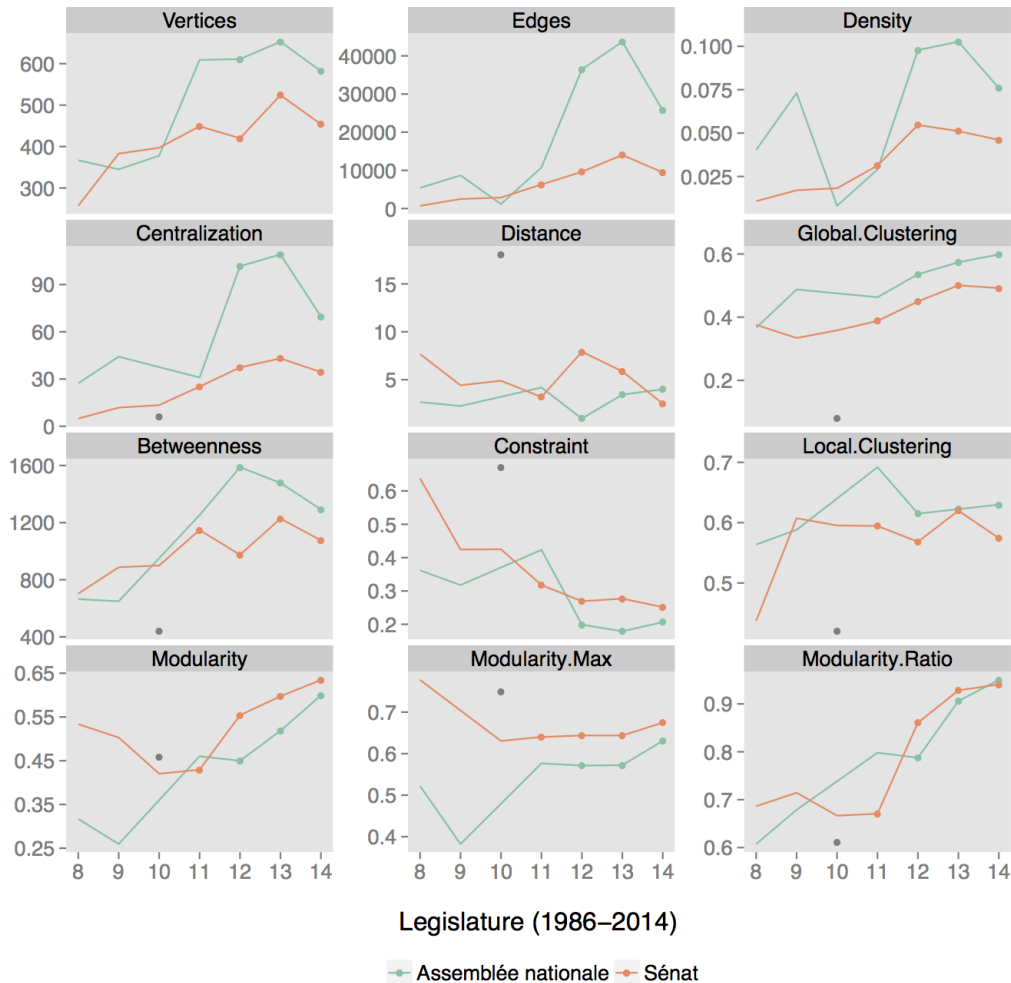




# Measures

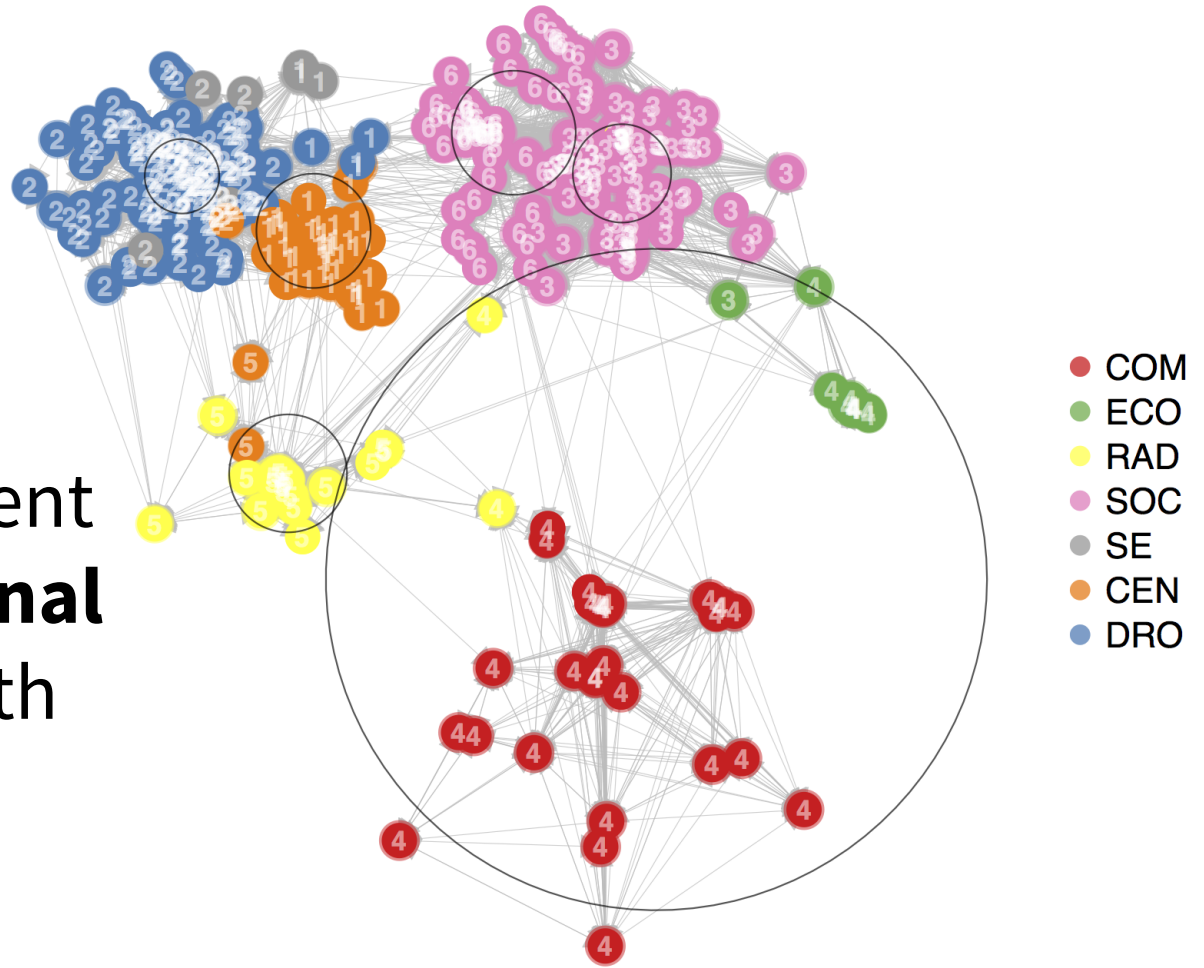
`tnet` for **weighted degree** measures

`igraph` for **party modularity**



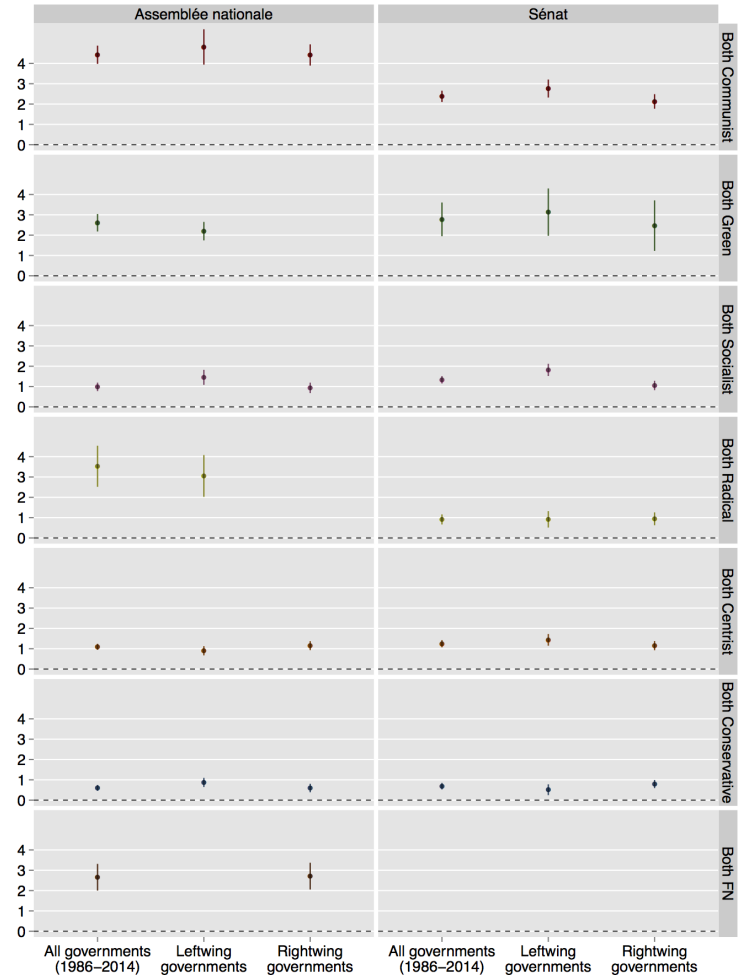
# Models (1)

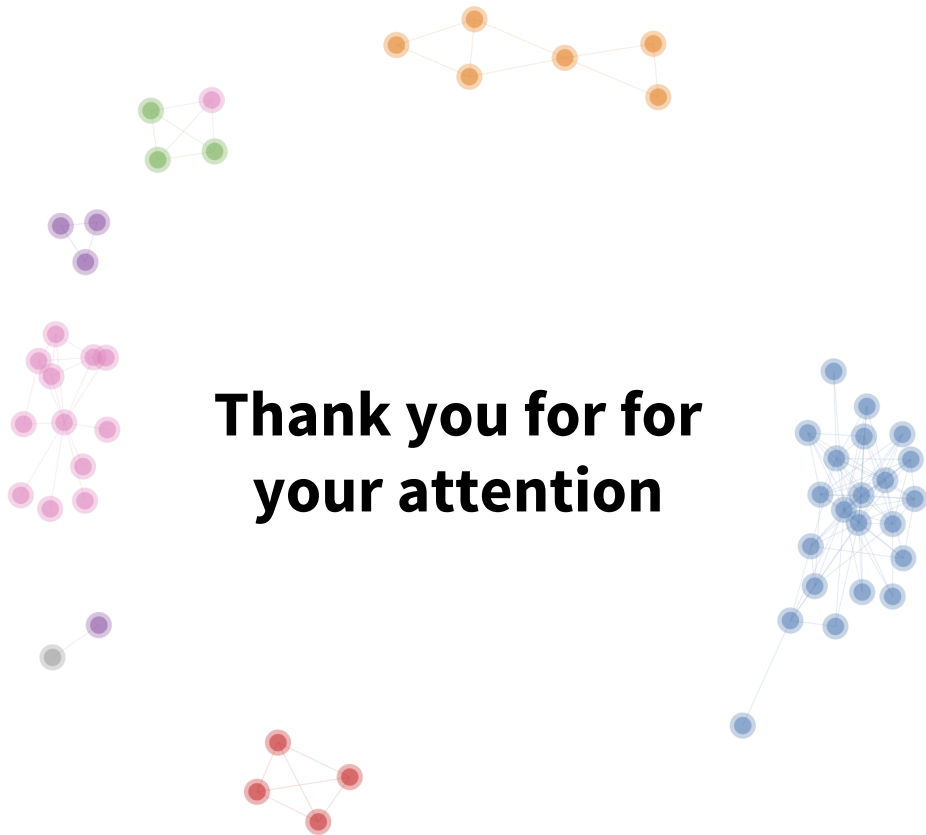
latentnet for  
cluster assignment  
in a **2-dimensional  
latent space** with  
 $k$  party groups



# Models (2)

`ergm` for exponential random graph models to estimate **party discipline** (differential homophily)





**Thank you for for  
your attention**

Network plots

[github.com/ggobi/GGally](https://github.com/ggobi/GGally)

[github.com/briatte/ggnet](https://github.com/briatte/ggnet)

Mentioned work

[github.com/briatte/epam](https://github.com/briatte/epam)

[github.com/briatte/neta](https://github.com/briatte/neta)

Next project

Tunisian Constitution

# Next project

Biographie

Commissions

Votes

Questions

Transparence

Amendements sur la constitu...



Biographie

Commissions

Votes

Questions

Transparence

Amendements sur la constitu...

Amendement sur **Préambule** Soumis par **15 élus**

Amendement relatif au cinquième paragraphe:

Ajout de la lutte contre toutes les formes de colonialisme et de racisme et à leur tête le sionisme.

Amendement sur **l'article 2** Soumis par **12 élus**

Modifier:

La Tunisie est un Etat à caractère civil, basé sur la citoyenneté, la volonté du peuple "et la primauté de la Constitution et la suprématie du droit".

19 mai 2014

- Vote relatif au renvoi du projet de loi N°44/2012 relatif aux tribunaux spécialis...
- Vote relatif à la liste consensuelle des candidats à l'instance de la vérité et de la...

09 mai 2014

- Vote relatif au communiqué de la séance plénière suite au retrait des deux moti...
- Vote relatif à la tenue de la séance plénière d'examen des deux motions de cen...

01 mai 2014

Loi électorale

- Proposition de la loi dans sa totalité
- Retour à l'article 167 de la proposition de loi
- Amendement de l'article 23 ter: Cinquième des têtes de listes des jeunes + 30 ...